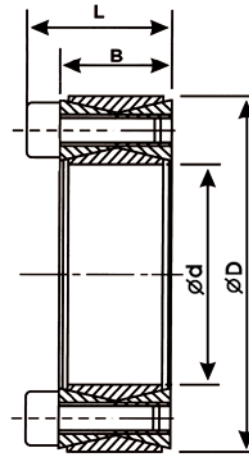


SA 非自動校心型 / None self-centering



SA-

內徑 / Inside Diameter

規格 No.	d mm	D mm	B mm	L mm	M mm	TS Nm	T Nm	F KN	P N/mm ²	重量 Kg
SA-18	18	47	20	26	8-M6	14	250	27	90	0.24
SA-19	19	47	20	26	8-M6	14	260	27	90	0.23
SA-20	20	47	20	26	8-M6	14	270	27	90	0.23
SA-22	22	47	20	26	8-M6	14	300	27	90	0.22
SA-24	24	50	20	26	8-M6	14	360	30	95	0.24
SA-25	25	50	20	26	8-M6	14	380	30	95	0.24
SA-28	28	55	20	26	12-M6	14	470	34	100	0.28
SA-30	30	55	20	26	12-M6	14	500	34	100	0.27
SA-32	32	60	20	26	12-M6	14	650	41	110	0.32
SA-35	35	60	20	26	12-M6	14	700	41	110	0.30
SA-38	38	65	20	26	15-M6	14	880	45	110	0.35
SA-40	40	65	20	26	15-M6	14	950	47	110	0.33
SA-42	42	75	24	32	12-M8	35	1600	75	130	0.58
SA-45	45	75	24	32	12-M8	35	1700	75	130	0.55
SA-48	48	80	24	32	12-M8	35	1800	75	120	0.62
SA-50	50	80	24	32	12-M8	35	1900	75	120	0.59
SA-55	55	85	24	32	14-M8	35	2300	85	130	0.64
SA-60	60	90	24	32	14-M8	35	2500	85	120	0.68
SA-65	65	95	24	32	16-M8	35	3000	95	130	0.73
SA-70	70	110	28	38	14-M10	69	4800	130	130	1.30
SA-75	75	115	28	38	14-M10	69	5000	130	130	1.35
SA-80	80	120	28	38	14-M10	69	5300	130	130	1.42
SA-85	85	125	28	38	16-M10	69	6400	150	140	1.50
SA-90	90	130	28	38	16-M10	69	6500	160	140	1.56
SA-95	95	135	28	38	18-M10	69	8000	170	140	1.63
SA-100	100	145	33	45	15-M12	120	9700	190	140	2.23
SA-110	110	155	33	45	15-M12	120	10600	200	130	2.37
SA-120	120	165	33	45	16-M12	120	13000	210	130	2.60
SA-130	130	180	38	50	20-M12	120	18000	270	120	3.60
SA-140	140	190	38	50	24-M12	120	21000	300	120	3.75
SA-150	150	200	38	50	24-M12	120	24000	320	120	4.10
SA-160	160	210	38	50	26-M12	120	28000	350	130	4.30
SA-170	170	225	44	58	20-M14	190	33000	380	120	5.70
SA-180	180	235	44	58	24-M14	190	38000	420	120	6.00
SA-190	190	250	52	66	28-M14	190	46000	480	110	8.20
SA-200	200	260	52	66	30-M14	190	53000	530	120	8.50
SA-220	220	285	56	72	26-M16	295	68000	620	120	11.22
SA-240	240	305	56	72	30-M16	295	86000	710	130	12.20
SA-260	260	325	56	72	34-M16	295	105000	810	135	13.50

★本產品提供客製無電解鍍和鍍鋅服務 / Electronless Nickel Plating or Galvanized is optional

M：公制螺絲 / Metric Screw

P：輪轂面壓力 / Contact Pressure on Hub Surface

TS：螺絲旋緊扭矩 / Drive Torque of Screw

F：軸向推力 / Thrust Force

T：在TS下之傳達扭矩 / Transmissible Torque