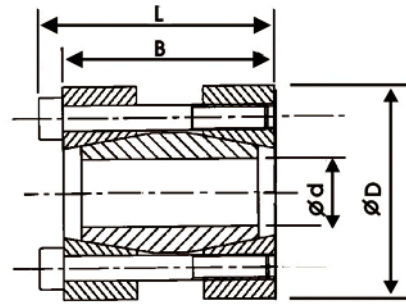


SM 軸對軸型 / Rigid Coupling



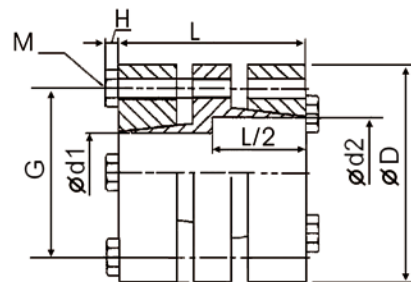
SM-

內徑 / Inside Diameter

規格 No.	d mm	D mm	B mm	L mm	M mm	TS Nm	T Nm	F KN	重量 Weight Kg
SM-15	15	45	50	56	4-M6	17	150	17	0.41
SM-16	16	45	50	56	4-M6	17	160	17	0.41
SM-17	17	50	50	56	4-M6	17	170	17	0.50
SM-18	18	50	50	56	4-M6	17	180	17	0.45
SM-19	19	50	50	56	4-M6	17	190	17	0.48
SM-20	20	50	50	56	4-M6	17	200	17	0.49
SM-22	22	55	60	66	6-M6	17	260	26	0.60
SM-24	24	55	60	66	6-M6	17	360	26	0.60
SM-25	25	55	60	66	6-M6	17	370	26	0.61
SM-28	28	60	60	66	6-M6	17	420	26	0.70
SM-30	30	60	60	66	6-M6	17	450	26	0.70
SM-35	35	75	75	83	4-M8	41	640	31	1.30
SM-40	40	75	75	83	4-M8	41	730	31	1.35
SM-45	45	85	85	93	6-M8	41	1230	47	1.85
SM-50	50	90	85	93	6-M8	41	1370	47	2.09
SM-60	60	100	85	93	8-M8	41	2200	64	2.36
SM-65	65	105	85	93	8-M8	41	2370	64	3.0
SM-70	70	115	100	110	6-M10	83	3050	90	5.4
SM-75	75	125	100	110	6-M10	83	3260	90	5.0
SM-80	80	125	100	110	6-M10	83	3480	90	4.7

★本產品提供客製無電解鍍和鍍鋅服務 / Electronless Nickel Plating or Galvanized is optional

SMC 軸對軸型 / Rigid Coupling



SMC- - -

外徑 / Diameter D1 D2

規格 No.	d1 mm		d2 mm		D mm	G mm	L mm	M mm	H mm	TS Nm	T Nm	重量 Weight Kg
	mix	max	mix	max								
SMC-54	15	25	15	25	54	42	58	8-M6	4	17	200	0.8
SMC-68	25	35	25	35	68	53	58	8-M6	4	17	260	1.6

SMC is produced after receiving the order

SMC-是接訂單生產