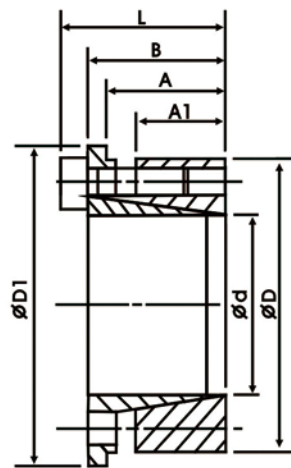


## SK 自動校心型 / Self-centering



SK-

內徑 / Inside Diameter

規格 No.	d mm	D mm	D1 mm	A mm	A1 mm	B mm	L mm	M mm	TS Nm	T Nm	F KN	P N/mm <sup>2</sup>	重量 Weight Kg
SK-08	08	21	23.5	14.5	10	16.5	20.5	3-M4	4.8	31.4	5.96	80	0.03
SK-10	10	23	25.5	14.5	10	16.5	20.5	3-M4	4.8	31.4	5.96	80	0.04
SK-11	11	24	26.5	14.5	10	16.5	20.5	4-M4	4.8	34.3	5.96	77	0.04
SK-12	12	26	28.5	14.5	10	16.5	20.5	4-M4	4.8	50.3	7.94	95	0.05
SK-14	14	28	30.5	17.5	12	20	24	6-M4	4.8	73.3	9.90	92	0.06
SK-15	15	29	31.5	17.5	12	20	24	6-M4	4.8	94.1	11.9	107	0.07
SK-16	16	30	32.5	17.5	12	20	24	6-M4	4.8	101	11.9	103	0.07
SK-17	17	31	33.5	17.5	12	20	24	6-M4	4.8	107	11.9	100	0.07
SK-18	18	32	34.5	17.5	12	20	24	6-M4	4.8	113	11.9	97	0.08
SK-19	19	33	35.5	17.5	12	20	24	6-M4	4.8	120	11.9	94	0.08

★本產品提供客製無電解鍍和鍍鋅服務 / Electronless Nickel Plating or Galvanized is optional

## 配合軸環之軸徑、孔徑公差表 / Applicable Shaft Size and Bore Size

單位：μm

尺寸 RANGE	$\phi 06-\phi 10$	$\phi 10-\phi 18$	$\phi 18-\phi 30$	$\phi 30-\phi 50$	$\phi 50-\phi 80$	$\phi 80-\phi 120$	$\phi 120-\phi 180$	$\phi 180-\phi 250$	$\phi 250-\phi 315$ 適用	軸環配合公差 Fit Tolerance of Lock	
Bore Tolerance 孔徑	H6	+9 +0	+11 +0	+13 +0	+16 +0	+19 +0	+22 +0	+25 +0	+29 +0	+32 +0	
	H7	+15 +0	+18 +0	+21 +0	+25 +0	+30 +0	+35 +0	+40 +0	+46 +0	+52 +0	SC $\phi 10\sim\phi 38$ SSD.SMA
	H8	+22 +0	+27 +0	+33 +0	+39 +0	+46 +0	+54 +0	+63 +0	+72 +0	+81 +0	SA.SB.SD.SDS. SES.SK.SF. SC $\phi 40\sim\phi 150$
Shaft Diameter Tolerance 軸徑	h6	-9 -0	-11 -0	-13 -0	-16 -0	-19 -0	-22 -0	-25 -0	-29 -0	-32 -0	SC $\phi 10\sim\phi 38$
	h7	-15 -0	-18 -0	-21 -0	-25 -0	-30 -0	-35 -0	-40 -0	-46 -0	-52 -0	SSD
	h8	-22 -0	-27 -0	-33 -0	-39 -0	-46 -0	-54 -0	-63 -0	-72 -0	-81 -0	SA.SB.SD.SDS. SES.SK.SF. SC $\phi 40\sim\phi 150$

★ : SA型2組使用扭力 1.7倍 / 1.7 times torque generated by using two sets of SA type  
 SA型3組使用扭力 2.3倍 / 2.3 times torque generated by using three sets of SA type  
 SA型4組使用扭力 2.9倍 / 2.9 times torque generated by using four sets of SA type  
 SC型2組使用扭力 1.5倍 / 1.5 times torque generated by using two sets of SC type  
 SC型3組使用扭力 1.8倍 / 1.8 times torque generated by using three sets of SC type  
 SC型4組使用扭力 2.0倍 / 2.0 times torque generated by using two sets of SC type